

Neón Dual 1615 SV 10W/m IP67

Flexible LED strip with dual light emission on both sides, designed in a side view format to create continuous and immersive lighting lines. Ideal for decorative and architectural applications requiring a modern finish and excellent light uniformity.



Qualities

- LED
- IP67
- 24V
- 55.000h
- McAdam C2

Led Colour

- 2.7K
- 3K
- 4K

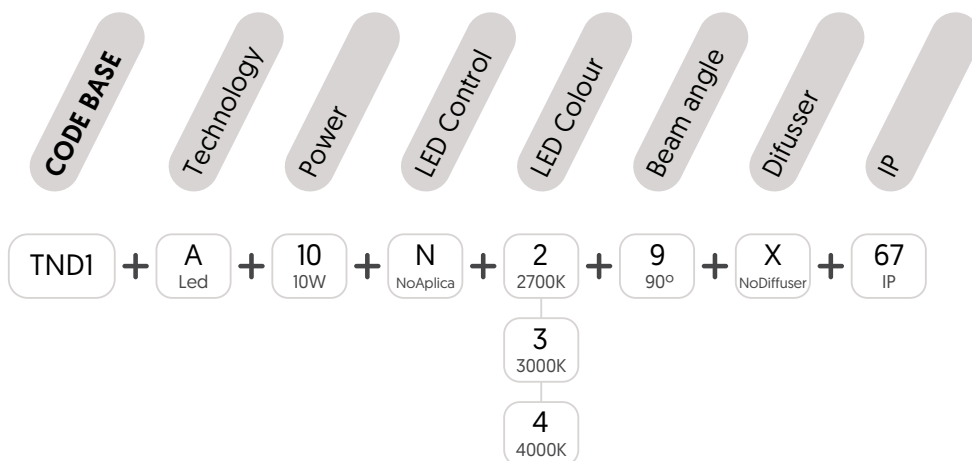
Regulation

- NO DIM
- DALI

Beam Angle



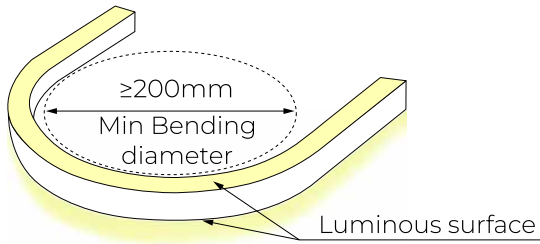
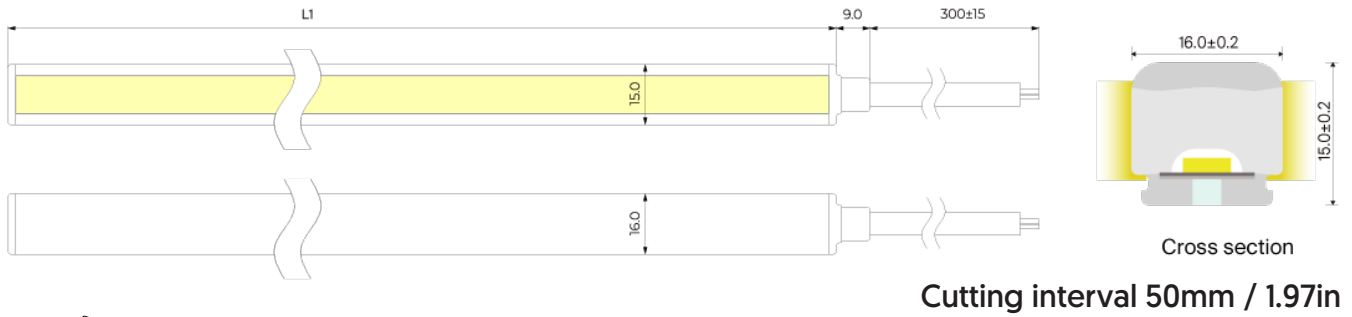
REF. CODE



PARAMETER

	W	V	TEMP	LUM/m	CRI
Neón Dual 1615 SV 10Wm	10W/m	24V	2.700K	604	>90
			3.000K	617	
			4.000K	638	

TEC. DRAWINGS

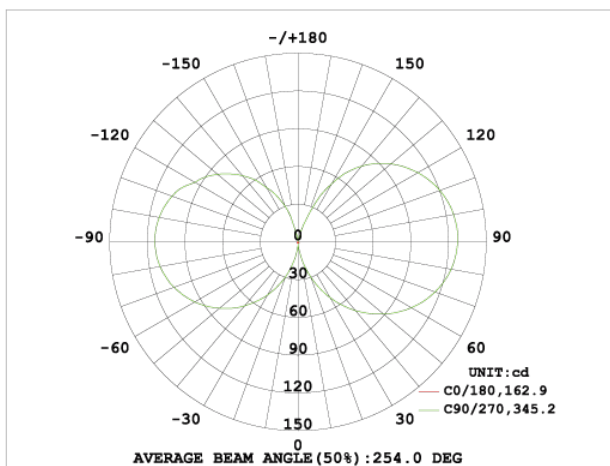


When the strip is bent left and right,
it emits light up and down.

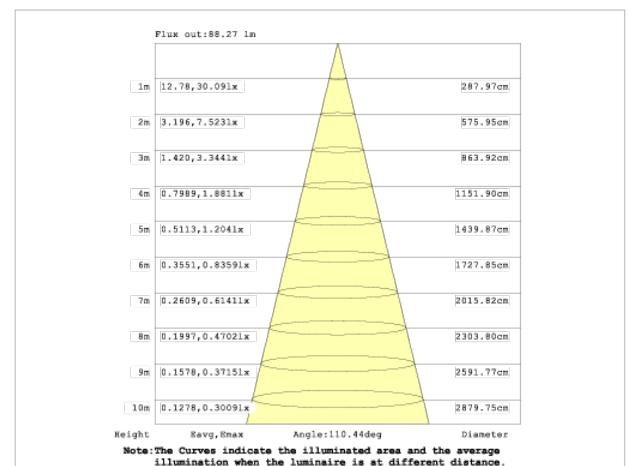
Technical Data

Model No.	Neón Dual 1615 SV 10Wm
Dimension	16mmx15mm / 0.63inx0.59in
Voltage	DC24V
RA	>90
Dimming	Dimmable
Efficacy	63.8LM/W @4000K
Storage temperature	-25~60°C / -22~140F
Ambient Temperature	Min.25°C Max.+55°C

Light Distribution Curve



Illuminance Curve



Cable Lead Option



Front cable entry
[standard]



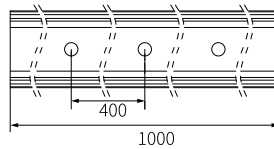
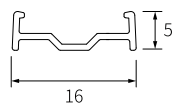
Bottom cable



Closed end cap

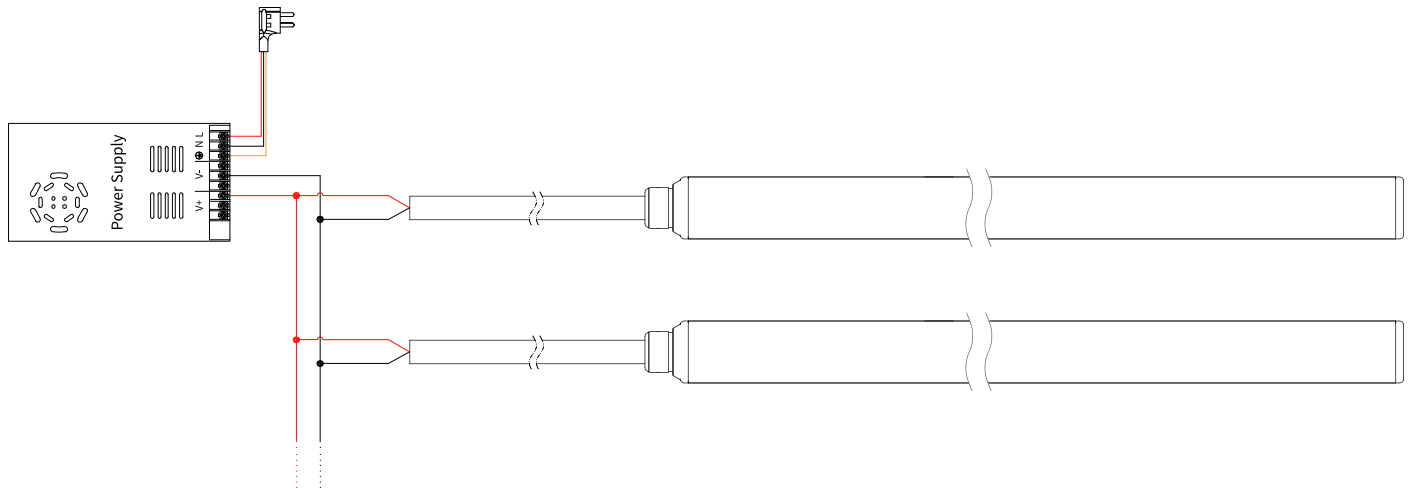
Accessories (Unit: mm)

Aluminium Profile

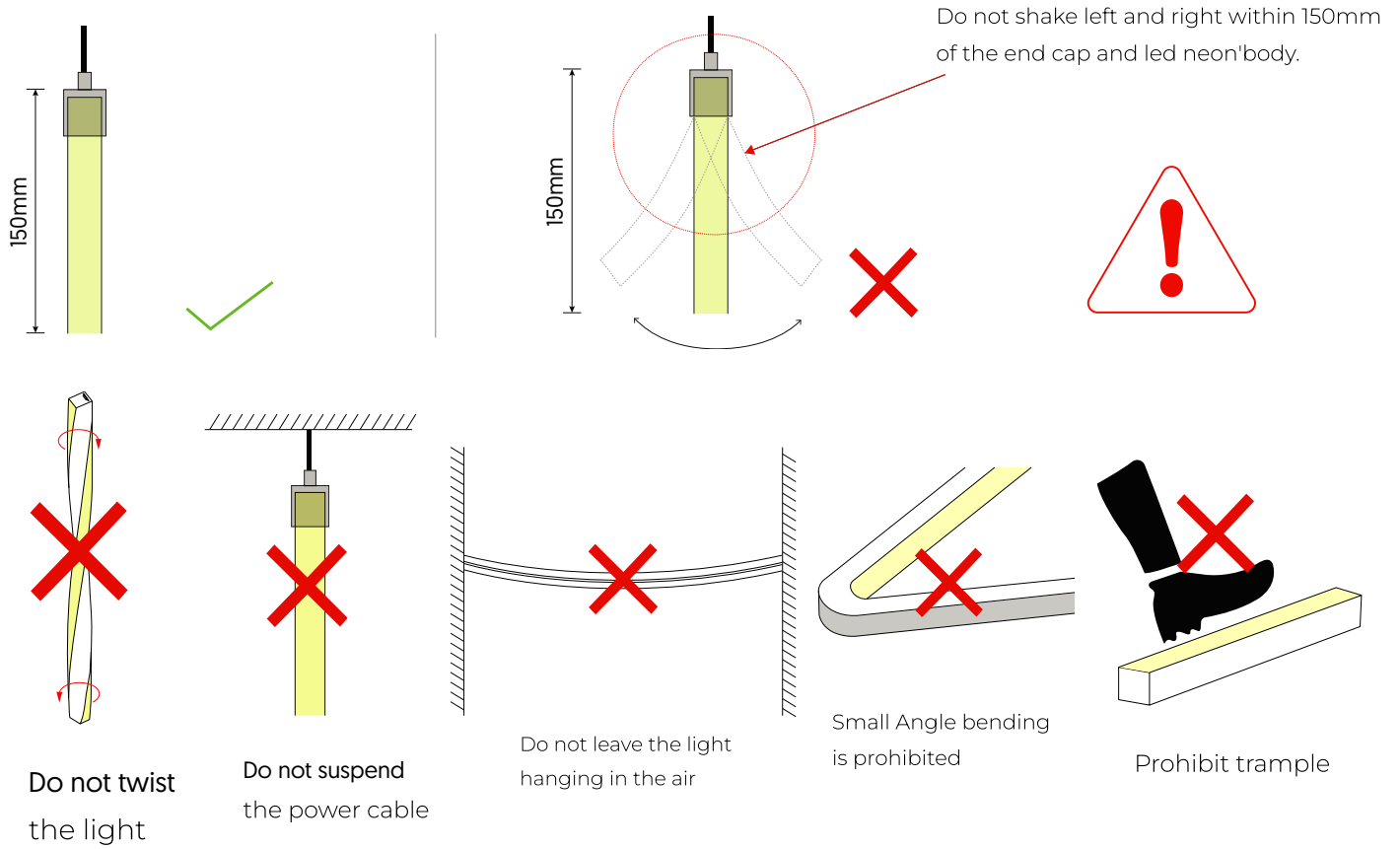


Dimension:
1000x16x5
Accessories:
Screw M2.5X15 (SUS304)

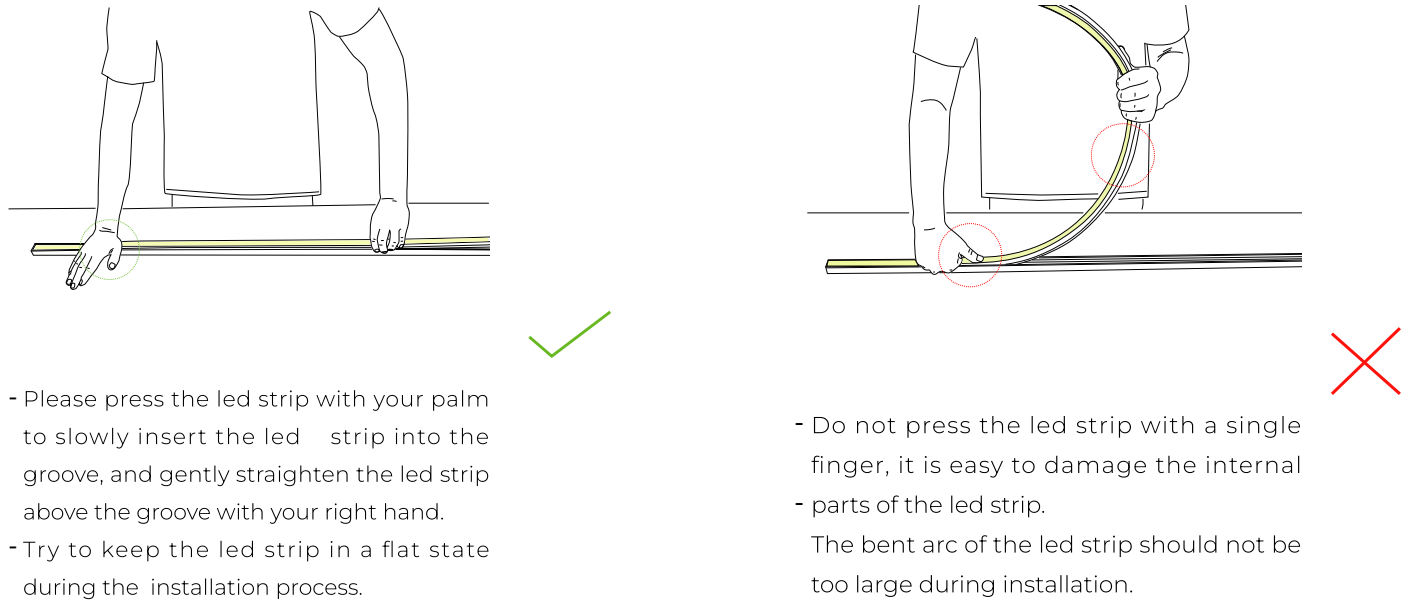
Connection diagram

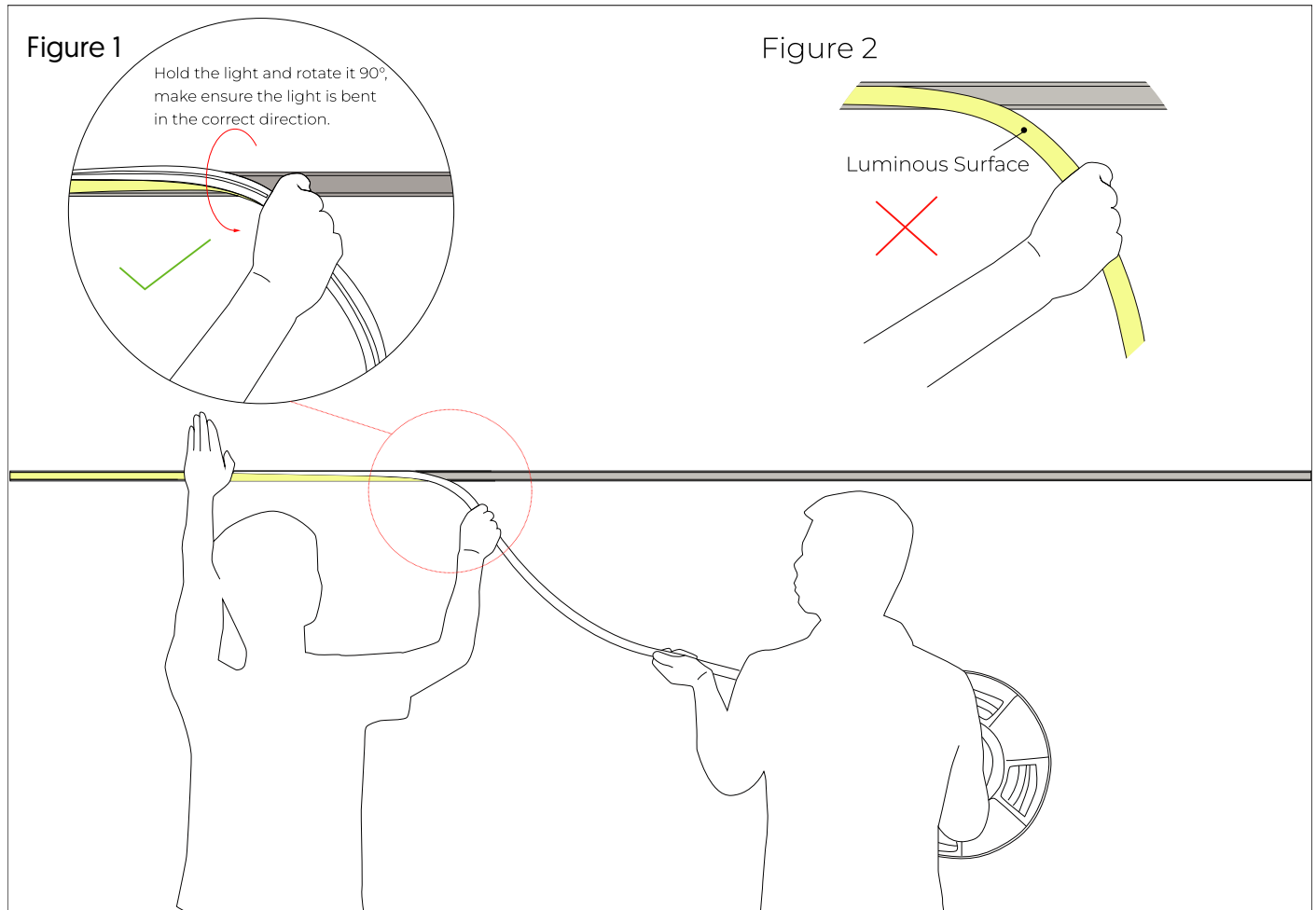


Installation Precautions



Put in the profile





1.Installer:

- Press the light with the palm of the left hand to slowly load it into the slot. Straighten the light with right hand, hold it and rotate it 90° to droop it in the direction of your hand. See Figure 1.
- Do not bend the luminous surface to the side. See Figure 2.

2.Assistant:

- Cooperate with the installer to lift the reel of the light, and then slowly deliver the light to installer. Do not pull or twist the light during the installation.