

Neon Black Confort 1010 TV 10W/m

Neon Black Confort 1010 TV 10W/m is a flexible silicone neon LED strip designed for top-view continuous lighting. It delivers uniform, glare-controlled illumination with a smooth linear effect, making it ideal for decorative and architectural applications where visual comfort and clean design are required.



Qualities

LED

24V
IP67
⌚ 55.000h
McAdam C2

Led Colour

2.7K
3K
4K

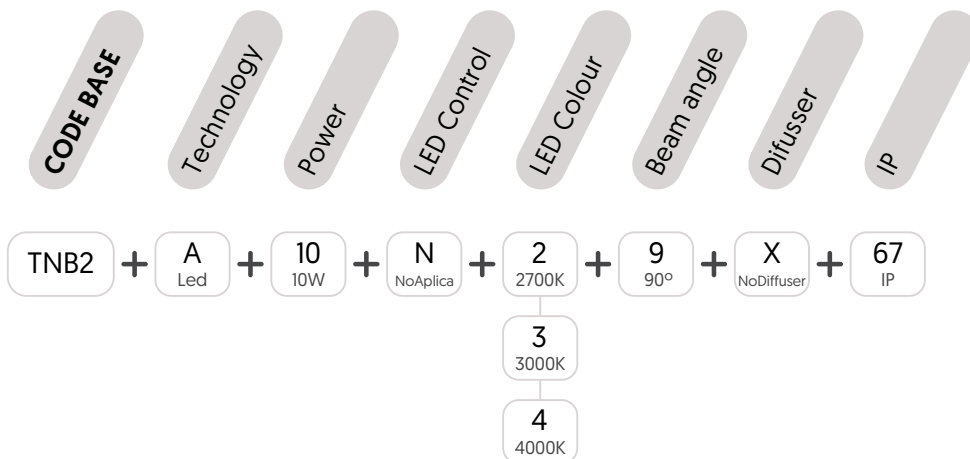
Regulation

NO DIM
DALI

Beam Angle

90°

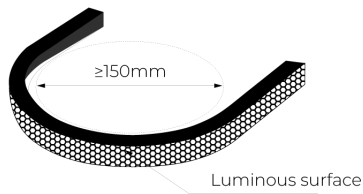
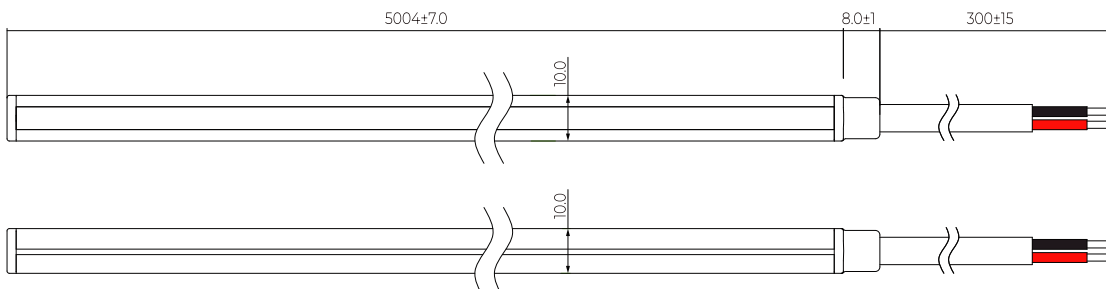
REF. CODE



PARAMETER

	W	V	TEMP	LUM/m	CRI
Neón Black Confort 1010 VB 10W/m	10W	24V	2.700K	10	>90
			3.000K	10	
			4.000K	10	

TEC. DRAWINGS

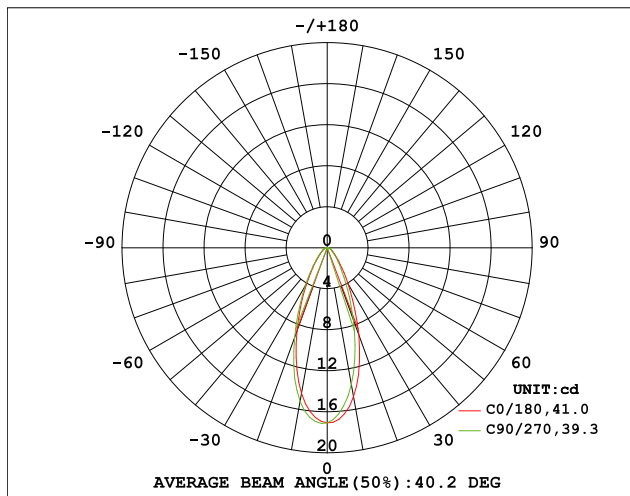


Min bending diameter

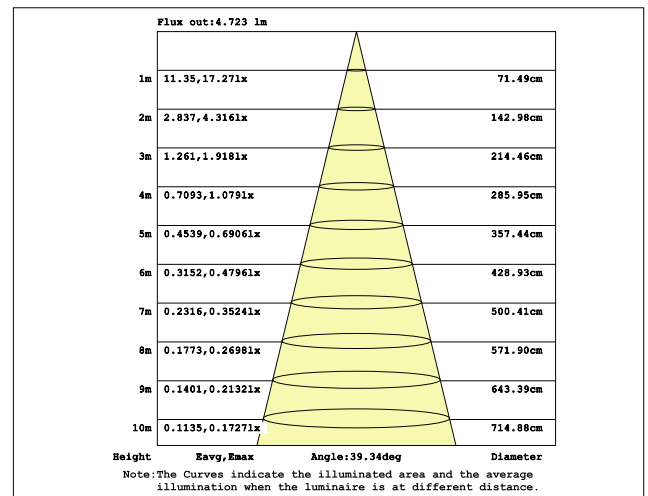
Technical Data

Model No.	Neon Black Confort 1010 TV 10W/m
Dimension	10mmx10mm / 0.39inx0.39in
Voltage	DC24V
RA	>90
Dimming	Dimmable
UGR	<19
Storage temperature	-25~60°C / -22~140F
Ambient Temperature	Min.25°C Max.+55°C

Light Distribution Curve



Illuminance Curve



Cable Lead Option



Front cable entry (standard)



Side cable



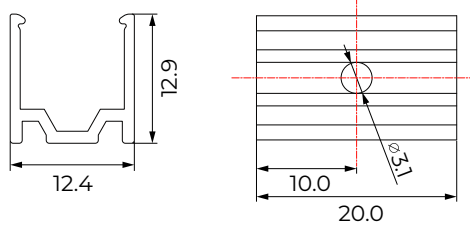
Bottom cable



Closed end cap

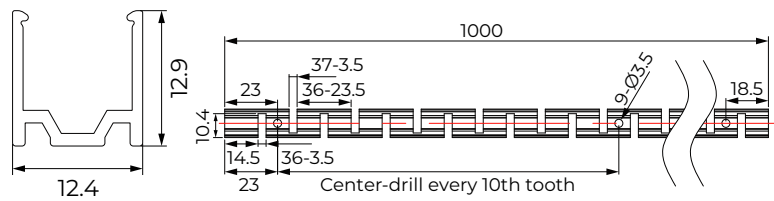
Accessories (Unit: mm)

Aluminium Mounting clips



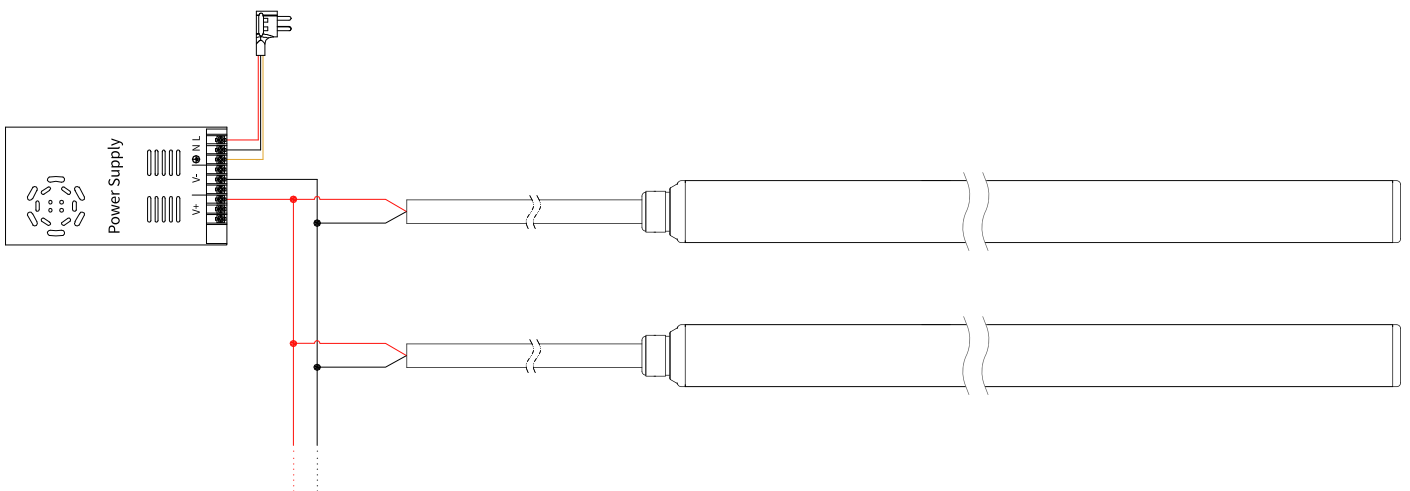
Length: 20x12.4x12.9

Aluminium Mounting clips

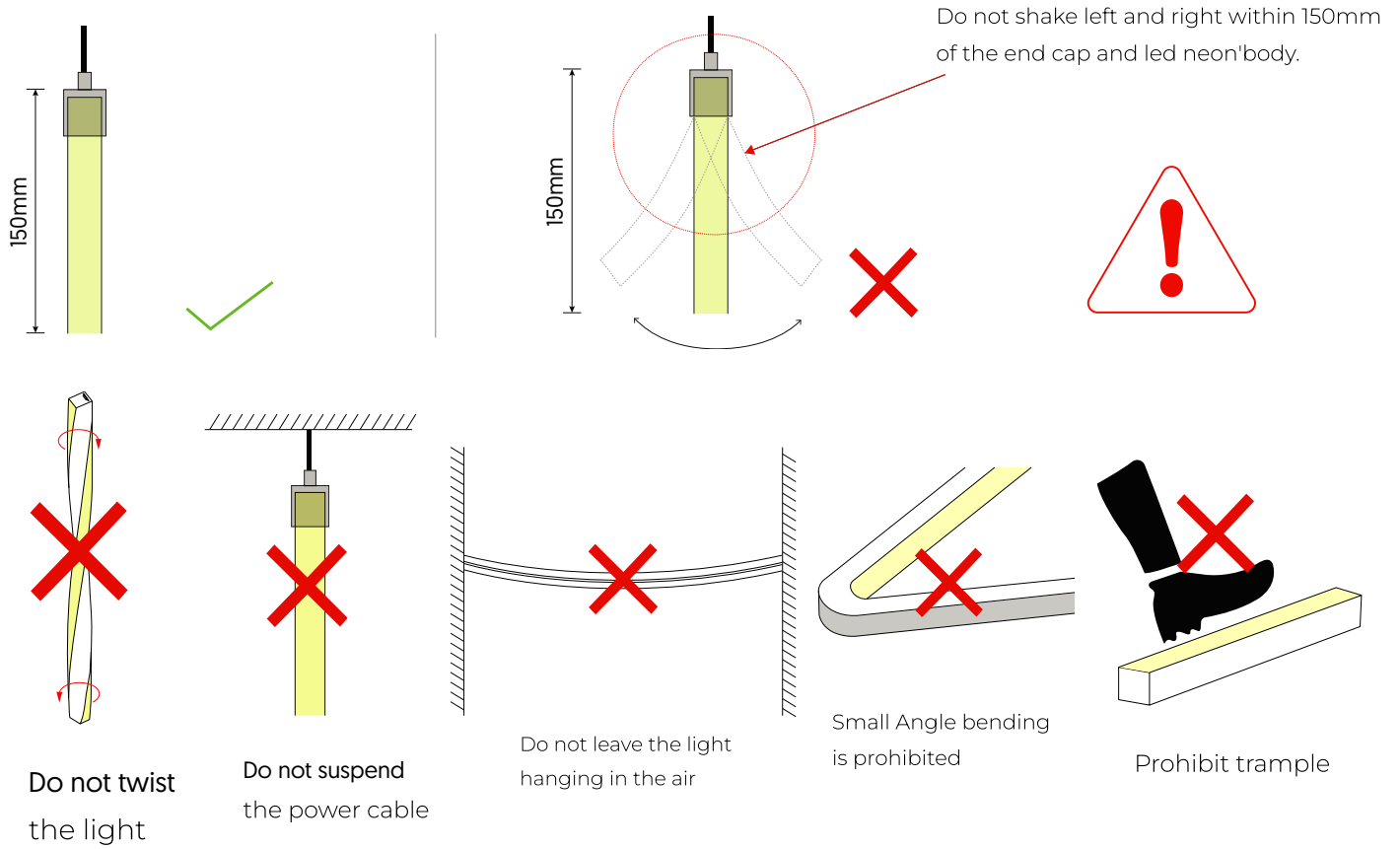


Length: 1000x12.4x12.9

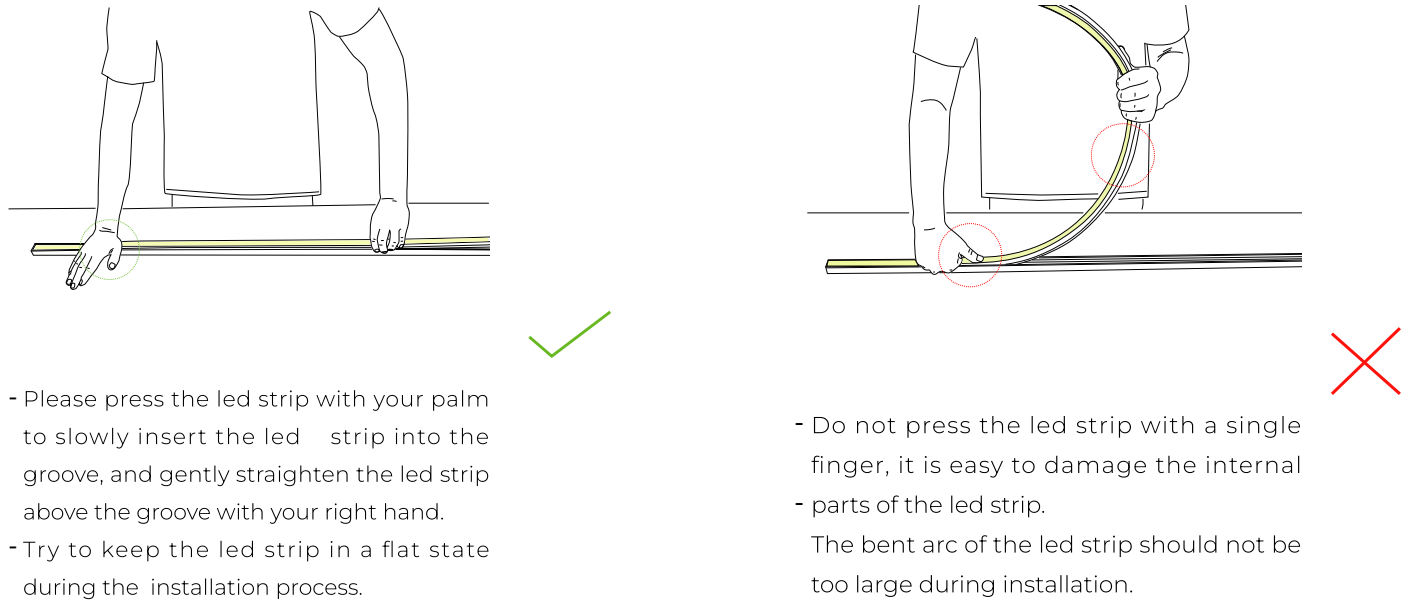
Connection diagram

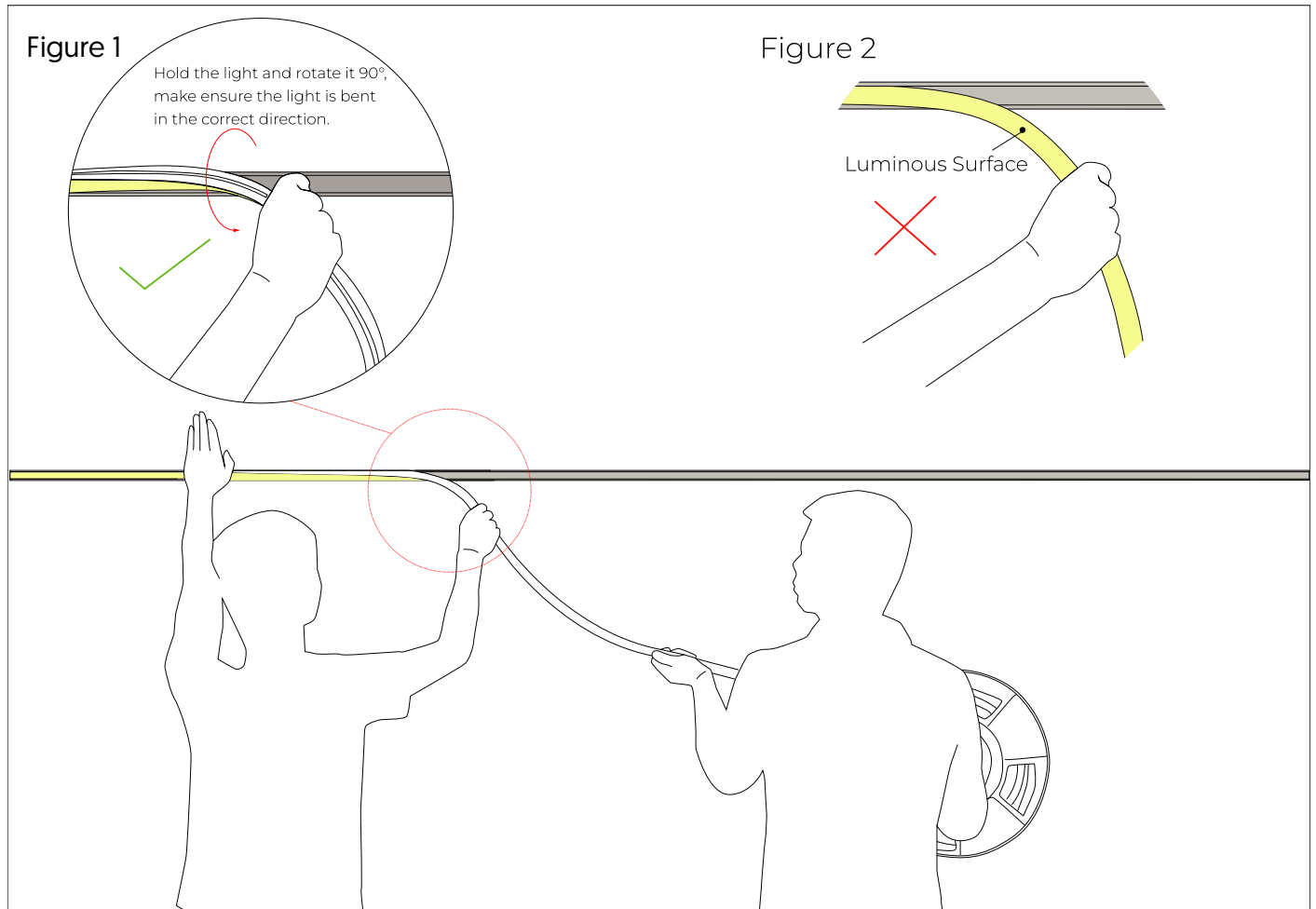


Installation Precautions



Put in the profile





1.Installer:

- Press the light with the palm of the left hand to slowly load it into the slot. Straighten the light with right hand, hold it and rotate it 90° to droop it in the direction of your hand. See Figure 1.
- Do not bend the luminous surface to the side. See Figure 2.

2.Assistant:

- Cooperate with the installer to lift the reel of the light, and then slowly deliver the light to installer. Do not pull or twist the light during the installation.