

ALTA LUMINOSIDAD

Ref: 33.017 4200°K
 Ref: 33.018 3200°K
 Ref: 33.019 2850°K

Tira flexible serie "PREMIUM RETAIL"

IP20 con 238 leds/metro 3014SMD.

Requiere uso de led profile para disipación.

Cinta térmica disipadora incluida.

PCB 10mm

Estabilizador de corriente.

CRI>90

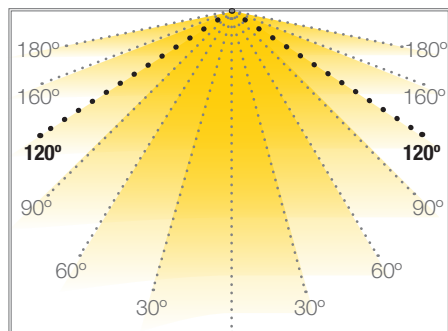
Uso diario máximo recomendado: 18h

Conexión máxima en circuito abierto: 5m

Conexión máxima en circuito cerrado: 10m

Vida útil: 50.000h*

*En función de la disipación del perfil, de las horas diarias trabajadas y de la temperatura externa ambiental de trabajo.



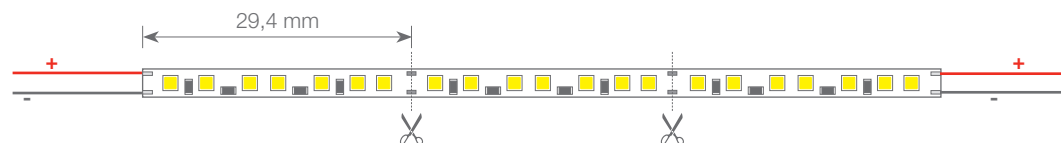
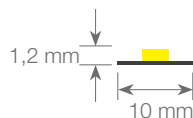
GOMERA

TIRAS FLEXIBLES



Potencia (W)	21W/m
Voltaje (V)	24V
Tipo Led	SMD3014
Lumens (4200°K)	2450 Lm/m
Lumens (3200°K)	2300 Lm/m
Lumens (2850°K)	2100 Lm/m
CRI	>90
Emisión de luz	120°
Estanqueidad (IP)	IP20
Nº leds/m	238
Medidas	5000x10x1.2mm
Cortable	cada 29,4mm
PCB	10mm
Temperatura trabajo	-40°C / +60°C
Apto para	interior
Embalaje	1 rollo/5m
Garantía	4 años

Aprobado por: CE **RoHS** COMPLIANT

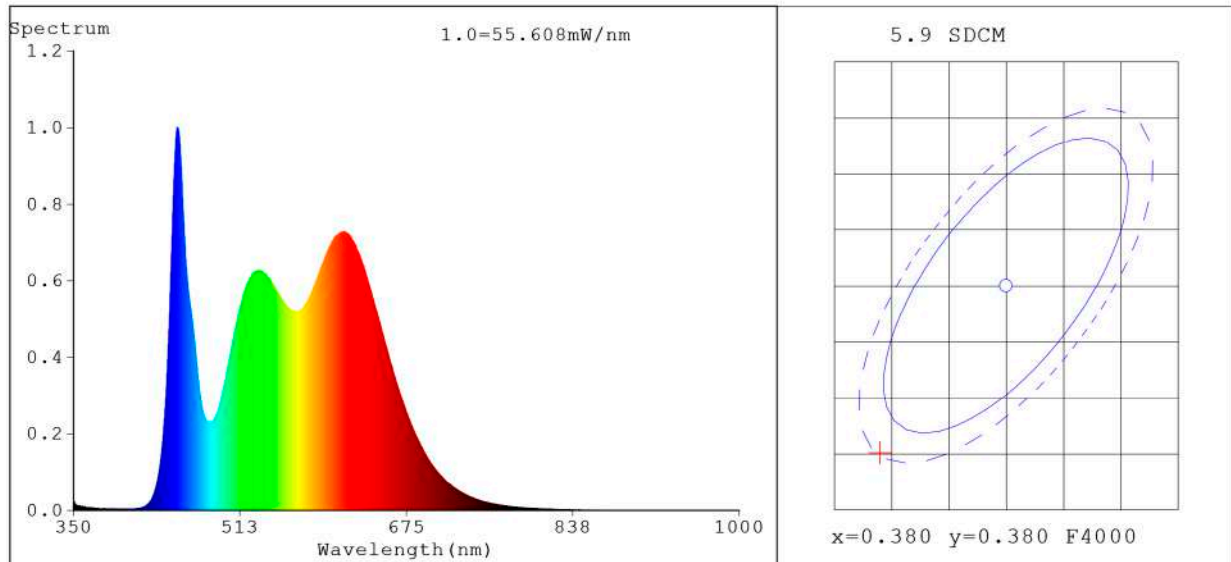


BARCELONA
 C/ Carles Buhigues, 13
 08420 Canovelles
 Info@luznegra.net
 Tel: +34 938 402 598

MADRID
 C/ Adaptación, 27
 28906 Getafe
 centro@luznegra.net
 Tel: +34 916 416 081

PARIS
 113 Avenue Joffre
 77450 Esbly
 france@luznegra.net
 Tel: +33 (0) 160 426 585

Spectrum Test Report



Color Parameters:

Chromaticity Coordinate: $x=0.3690$ $y=0.3651/u'=0.2222$ $v'=0.4946$
 CCT=4248K(Duv=-0.0021) Dominant WL:Ld =579.5nm Purity=20.3%
 Ratio:R=20.3% G=75.6% B=4.1%; Peak WL:Lp=451.5nm FWHM=22.1nm
 Render Index:Ra=95.7 CRI=92.1 TM30:Rf=91 Rg=102
 R1 =98 R2 =98 R3 =93 R4 =97 R5 =98 R6 =94 R7 =96
 R8 =92 R9 =76 R10=92 R11=92 R12=69 R13=99 R14=95 R15=97

Photo Parameters:

Flux = 2308 lm Eff. : 106.70 lm/W Fe = 7.595 W Scotopic:4337.7 S/P:1.8791

Electrical parameters:

V = 23.998 V I = 0.9015 A P = 21.63 W PF = 1.000

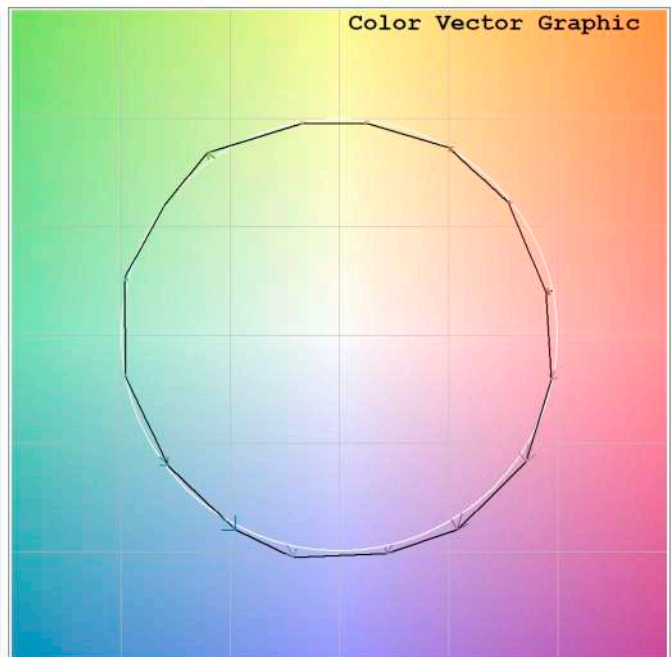
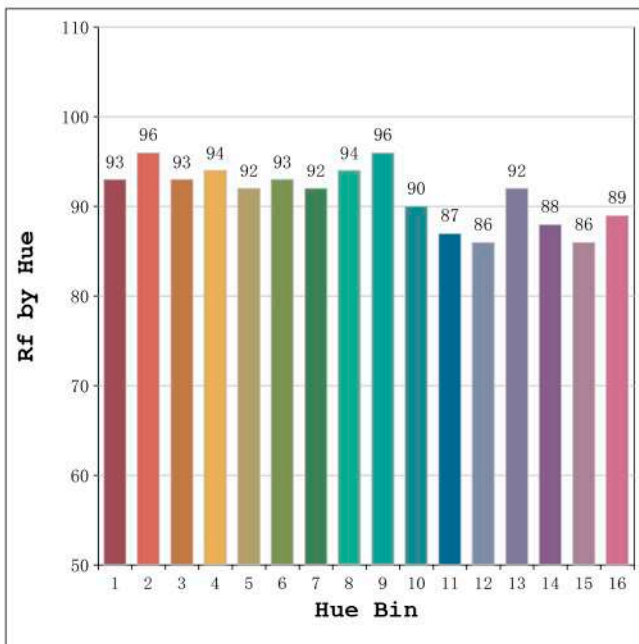
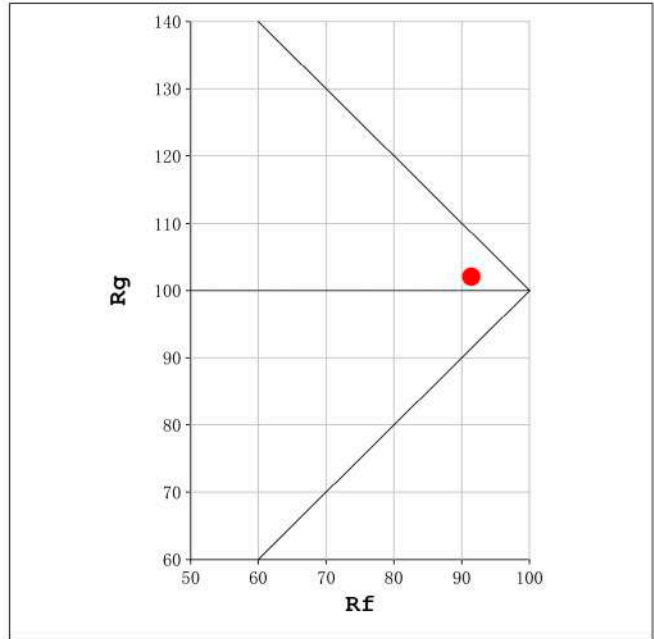
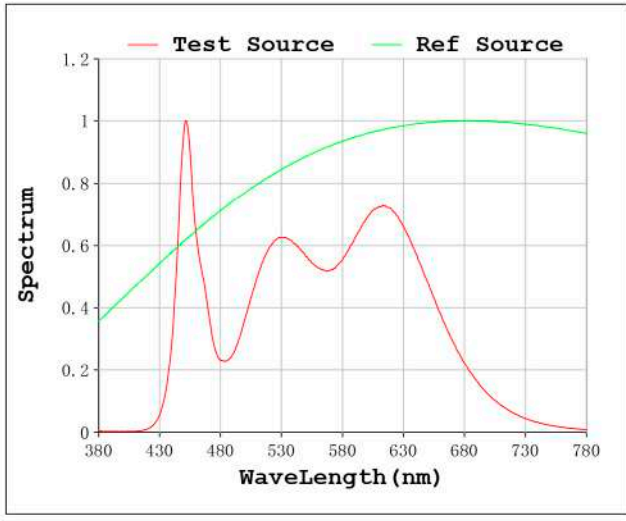
WHITE:ANSI_4000K

Status: Integral T = 478 ms Ip = 50437 (77%)

Model:Ecoled Gomera neutro
 Tester:Sergio Carneros
 Temperature:25Deg
 Manufacturer:Luz Negra S.L

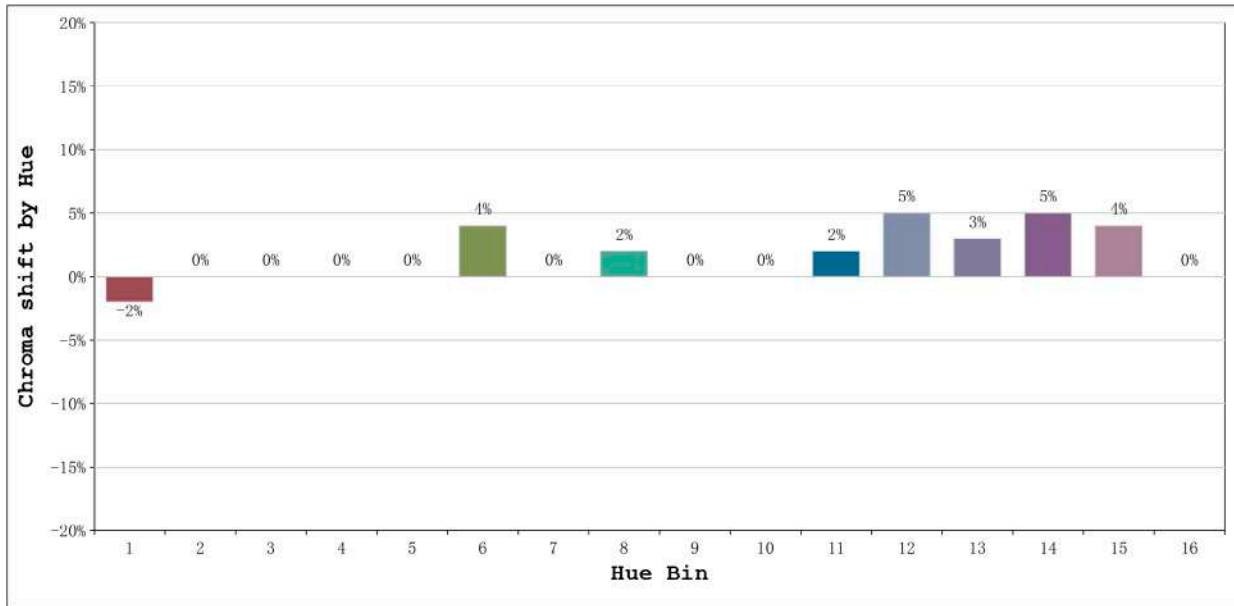
Number: 33.017
 Date:25-5-2021
 Humidity:57%
 Remarks:100cm de tira flexible

Rf: 91 CCT: 4248 K u': 0.2222
Rg: 102 Duv: -0.0021 v': 0.4946



Model:Ecoled Gomera neutro
Tester:Sergio Carneros
Temperature:25Deg
Manufacturer:Luz Negra S.L

Number: 33.017
Date:25-5-2021
Humidity:57%
Remarks:100cm de tira flexible

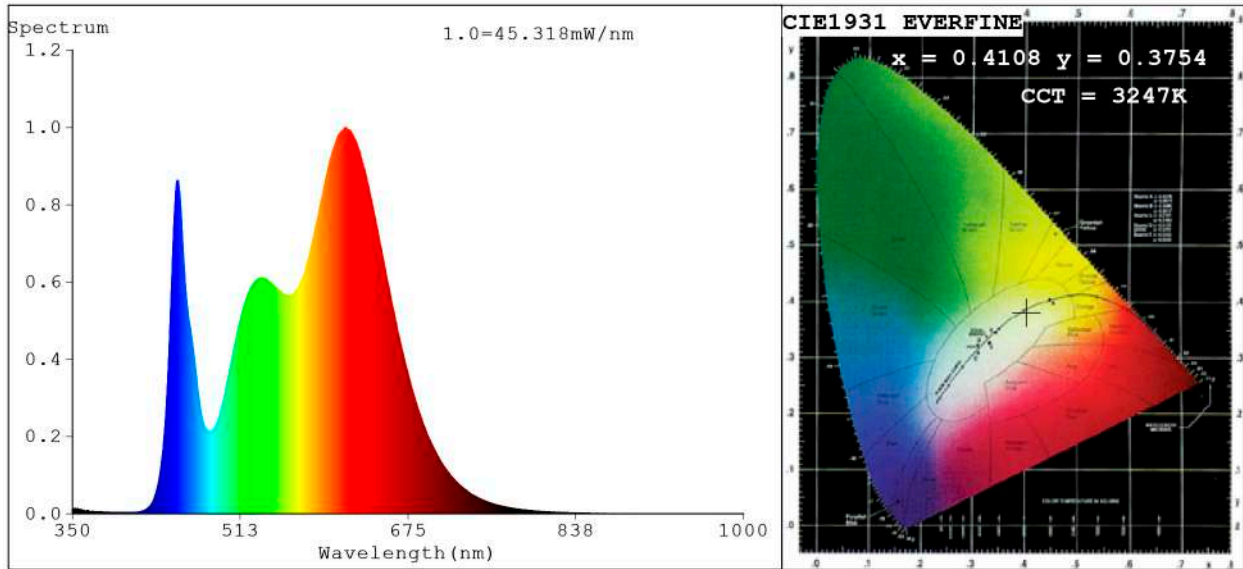


Hue Bin	Hue Angle	Rf	Graphic shift(%)	
			Chroma	Hue
1	0.0° - 22.5°	93	-2	0
2	22.5° - 45.0°	96	0	1
3	45.0° - 67.5°	93	0	3
4	67.5° - 90.0°	94	0	1
5	90.0° - 112.5°	92	0	2
6	112.5° - 135.0°	93	4	2
7	135.0° - 157.5°	92	0	0
8	157.5° - 180.0°	94	2	0
9	180.0° - 202.5°	96	0	1
10	202.5° - 225.0°	90	0	5
11	225.0° - 247.5°	87	2	9
12	247.5° - 270.0°	86	5	4
13	270.0° - 292.5°	92	3	-2
14	292.5° - 315.0°	88	5	-5
15	315.0° - 337.5°	86	4	-6
16	337.5° - 360.0°	89	0	-4

Model:Ecoled Gomera neutro
Tester:Sergio Carneros
Temperature:25Deg
Manufacturer:Luz Negra S.L

Number: 33.017
Date:25-5-2021
Humidity:57%
Remarks:100cm de tira flexible

Spectrum Test Report



Color Parameters:

Chromaticity Coordinate: $x=0.4108$ $y=0.3754$ / $u'=0.2459$ $v'=0.5055$
 CCT=3247K (Duv=-0.0079) Dominant WL:Ld =585.6nm Purity=36.0%
 Ratio:R=24.7% G=72.1% B=3.3%; Peak WL:Lp=615.4nm FWHM=150.3nm
 Render Index:Ra=94.2 CRI=91.8 TM30:Rf=90 Rg=105
 R1 =97 R2 =97 R3 =97 R4 =96 R5 =98 R6 =92 R7 =91
 R8 =86 R9 =69 R10=97 R11=91 R12=82 R13=96 R14=98 R15=97

Photo Parameters:

Flux = 2131 lm Eff. : 98.64 lm/W Fe = 7.124 W Scotopic:3394.5 S/P:1.5931

Electrical parameters:

V = 23.998 V I = 0.9001 A P = 21.60 W PF = 1.000

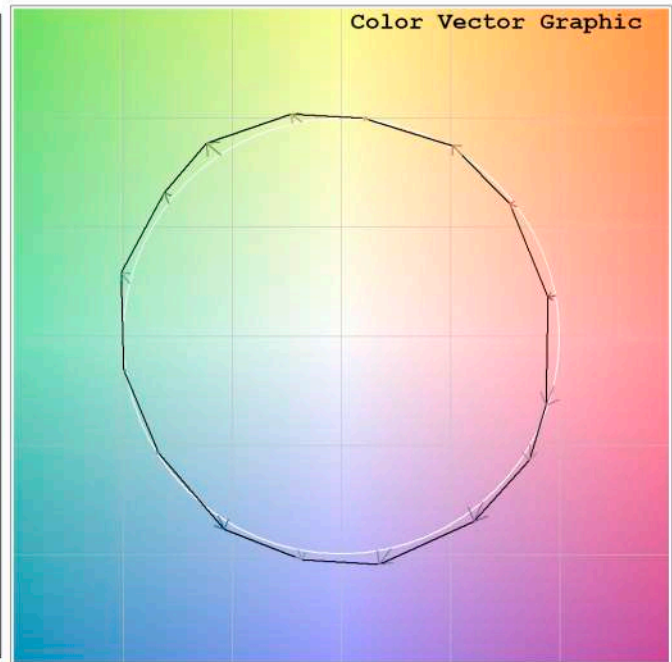
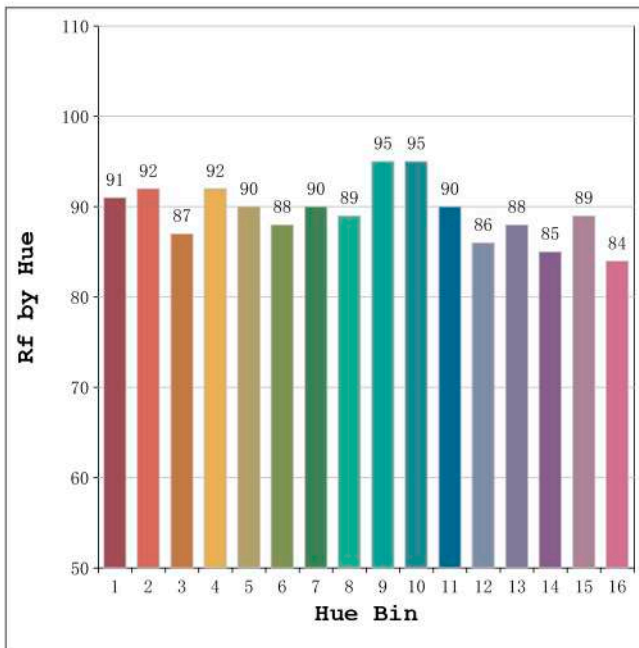
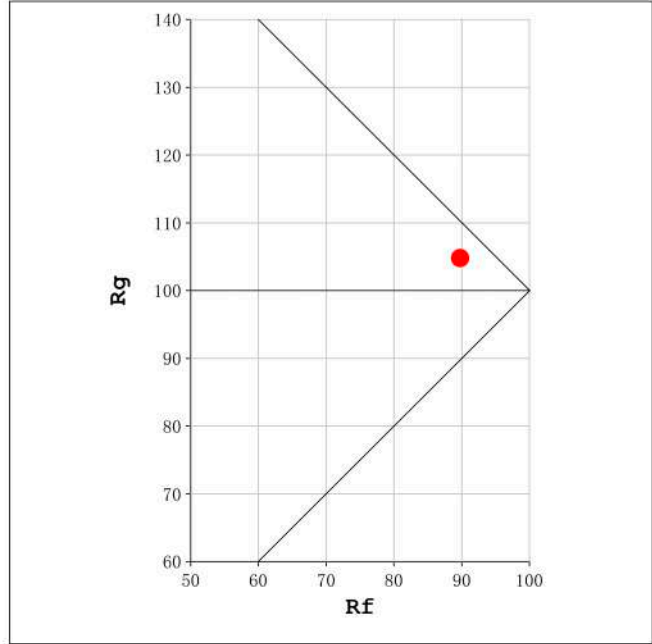
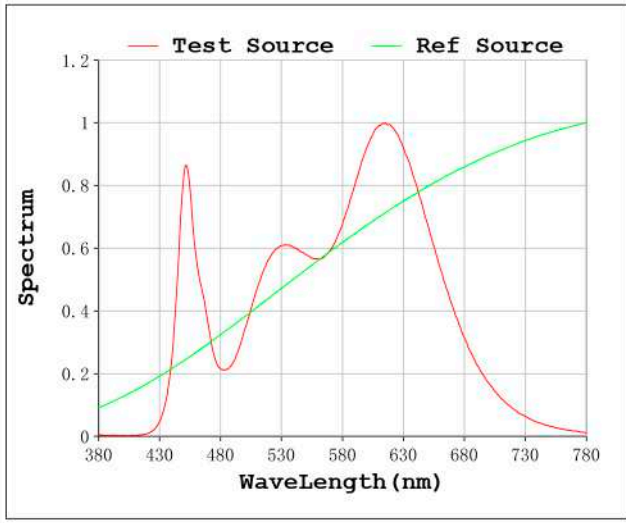
WHITE:OUT

Status: Integral T = 539 ms Ip = 51093 (78%)

Model:Ecoled Gomera 3200K
 Tester:Sergio Carneros
 Temperature:25Deg
 Manufacturer:Luz Negra S.L

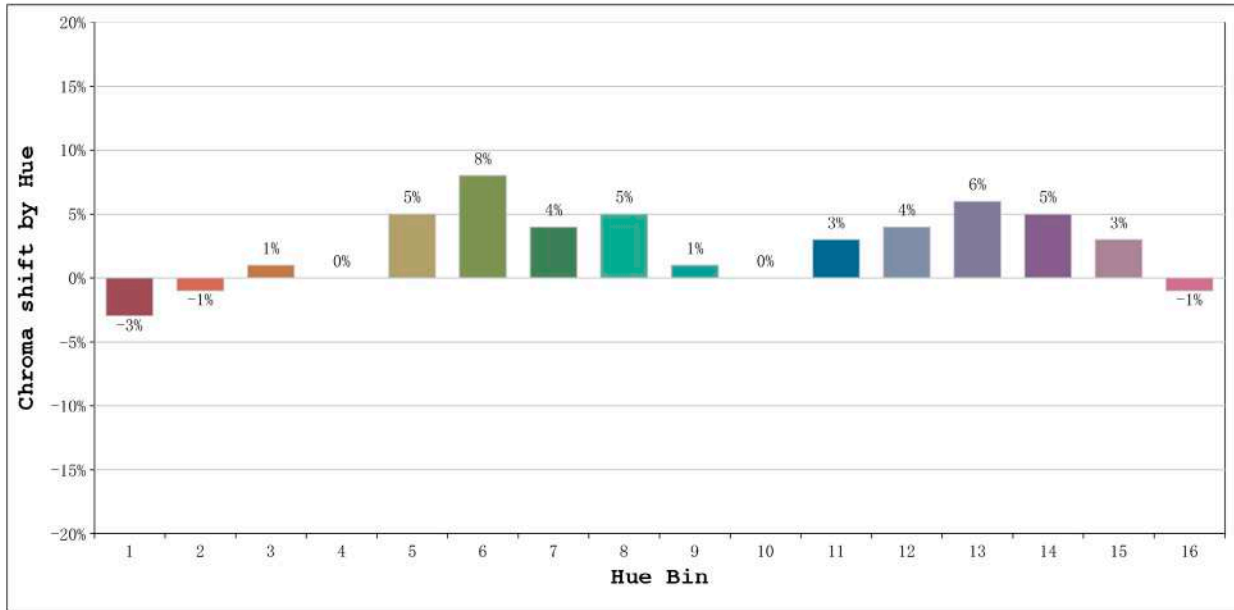
Number: 33.018
 Date:25-5-2021
 Humidity:57%
 Remarks:100cm de tira flexible

Rf: 90 CCT: 3247 K u': 0.2459
Rg: 105 Duv: -0.0079 v': 0.5055



Model:Ecoled Gomera 3200K
Tester:Sergio Carneros
Temperature:25Deg
Manufacturer:Luz Negra S.L

Number: 33.018
Date:25-5-2021
Humidity:57%
Remarks:100cm de tira flexible

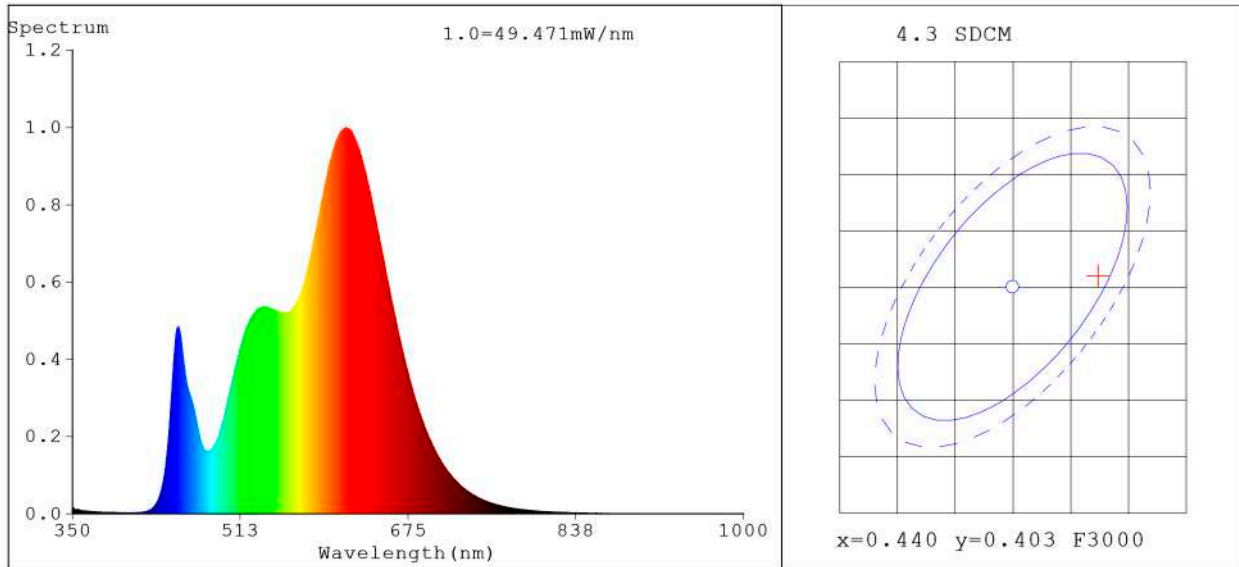


Hue Bin	Hue Angle	Rf	Graphic shift(%)	
			Chroma	Hue
1	0.0° - 22.5°	91	-3	0
2	22.5° - 45.0°	92	-1	3
3	45.0° - 67.5°	87	1	6
4	67.5° - 90.0°	92	0	2
5	90.0° - 112.5°	90	5	4
6	112.5° - 135.0°	88	8	3
7	135.0° - 157.5°	90	4	-2
8	157.5° - 180.0°	89	5	-3
9	180.0° - 202.5°	95	1	0
10	202.5° - 225.0°	95	0	2
11	225.0° - 247.5°	90	3	6
12	247.5° - 270.0°	86	4	3
13	270.0° - 292.5°	88	6	-6
14	292.5° - 315.0°	85	5	-7
15	315.0° - 337.5°	89	3	-5
16	337.5° - 360.0°	84	-1	-8

Model:Ecoled Gomera 3200K
Tester:Sergio Carneros
Temperature:25Deg
Manufacturer:Luz Negra S.L

Number: 33.018
Date:25-5-2021
Humidity:57%
Remarks:100cm de tira flexible

Spectrum Test Report



Color Parameters:

Chromaticity Coordinate: x=0.4474 y=0.4040/u'=0.2574 v'=0.5229
 CCT=2831K (Duv=-0.0013) Dominant WL:Ld =584.0nm Purity=55.5%
 Ratio:R=26.4% G=71.1% B=2.5%; Peak WL:Lp=614.8nm FWHM=141.2nm
 Render Index:Ra=94.2 CRI=91.2 TM30:Rf=90 Rg=101
 R1 =97 R2 =99 R3 =99 R4 =98 R5 =97 R6 =95 R7 =90
 R8 =78 R9 =52 R10=96 R11=95 R12=83 R13=99 R14=98 R15=90

Photo Parameters:

Flux = 2171 lm Eff. : 100.49 lm/W Fe = 7.043 W Scotopic:2973.9 S/P:1.37

Electrical parameters:

V = 23.998 V I = 0.9001 A P = 21.60 W PF = 1.000

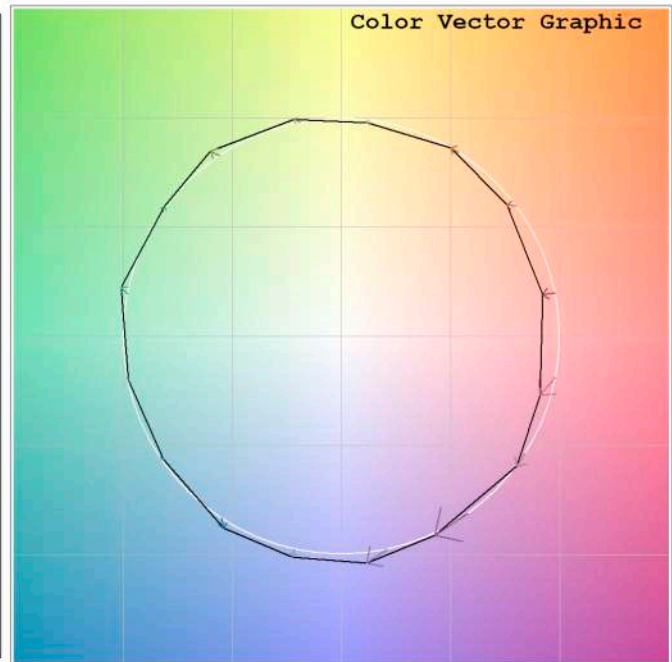
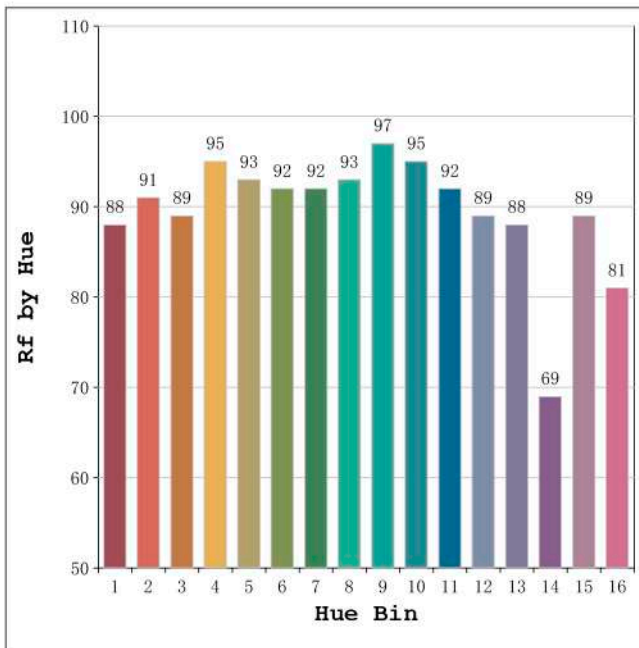
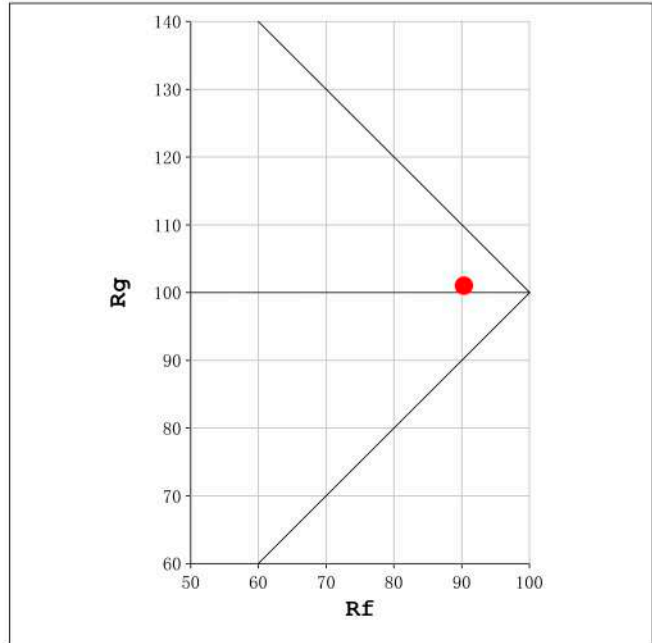
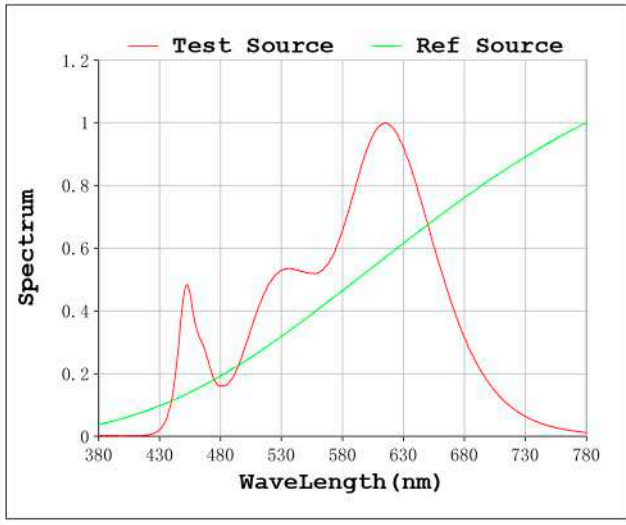
WHITE:ANSI_2700K

Status: Integral T = 478 ms Ip = 49424 (75%)

Model:Ecoled Gomera 2850K
 Tester:Sergio Carneros
 Temperature:25Deg
 Manufacturer:Luz Negra S.L

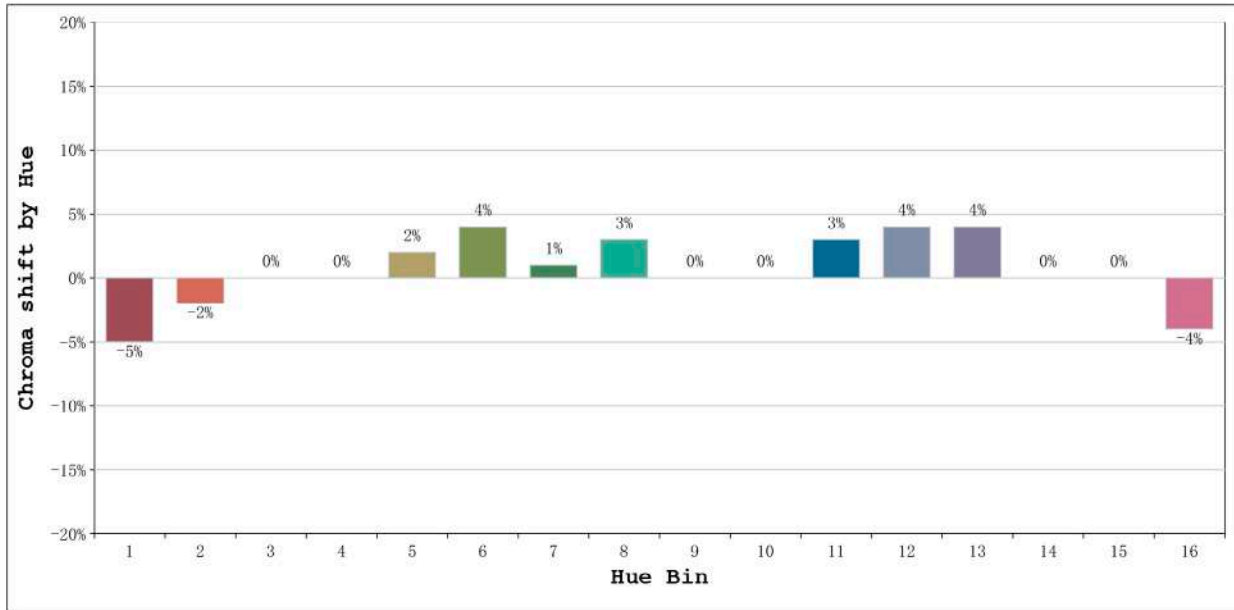
Number: 33.019
 Date:25-5-2021
 Humidity:57%
 Remarks:100cm de tira flexible

Rf: 90 CCT: 2831 K u': 0.2574
Rg: 101 Duv: -0.0013 v': 0.5229



Model:Ecoled Gomera 2850K
Tester:Sergio Carneros
Temperature:25Deg
Manufacturer:Luz Negra S.L

Number: 33.019
Date:25-5-2021
Humidity:57%
Remarks:100cm de tira flexible



Hue Bin	Hue Angle	Rf	Graphic shift(%)	
			Chroma	Hue
1	0.0° - 22.5°	88	-5	0
2	22.5° - 45.0°	91	-2	3
3	45.0° - 67.5°	89	0	5
4	67.5° - 90.0°	95	0	0
5	90.0° - 112.5°	93	2	3
6	112.5° - 135.0°	92	4	2
7	135.0° - 157.5°	92	1	-2
8	157.5° - 180.0°	93	3	-1
9	180.0° - 202.5°	97	0	0
10	202.5° - 225.0°	95	0	2
11	225.0° - 247.5°	92	3	3
12	247.5° - 270.0°	89	4	0
13	270.0° - 292.5°	88	4	-10
14	292.5° - 315.0°	69	0	-17
15	315.0° - 337.5°	89	0	-6
16	337.5° - 360.0°	81	-4	-8

Model:Ecoled Gomera 2850K
Tester:Sergio Carneros
Temperature:25Deg
Manufacturer:Luz Negra S.L

Number: 33.019
Date:25-5-2021
Humidity:57%
Remarks:100cm de tira flexible