

# LEDSPOTS

MISTER 11



## NEW LED SPOT ENGINES WITH DEFINED SPOTLIGHT

This new LEDSpot-Engine offers a brilliant defined spotlight with comparable light output of MR11 halogen lamps and that with reduced glare.

### Typical applications for LEDSpots

Integration in luminaires

- Residential lighting
- Retail lighting
- Museum lighting

### Mister 11

- **MODULAR SYSTEM: ENGINE + FLANGE**
- **NARROW COLOUR TOLERANCES:  
3 STEP MACADAM**
- **COLOUR RENDERING INDEX: CRI 90**
- **LUMINOUS FLUX: UP TO 635 LM**
- **MADE IN ITALY**



## LED Engines for Mister1 1

**LEDspot engine equipped with LED module, holder, thermal pad, heat sink, reflector and leads but without flange**

### Technical notes

Flange:  $\varnothing$  35 mm

COB PCB material: aluminium

Heatsink material: thermoconductive resin (A – 100 mA)  
or aluminium (version 350 mA)

Max. operating temperature at  $t_c$  point: 75 °C (A – 100 mA)  
or 85 °C (B – 350 mA)

Lumen maintenance: L90/B20;

50,000 hrs. at max. allowed operation current

70 °C (A – 100 mA) or 80 °C (B – 350 mA) at  $t_p$  point

Temperature depends on installation situation and has to be checked by the luminaire manufacturer.

Colour accuracy initially: 3 SDCM

Plastic clear cover to protect the reflector  
(diffuse cover on request)

Leads: Cu tinned, stranded conductors 0.5 mm<sup>2</sup>,

length: 200 mm, stripped lead ends (with plug on request)

With integrated cord grip



**LEDspot Mister1 1 – 100 mA**



**LEDspot Mister1 1 – 350 mA**

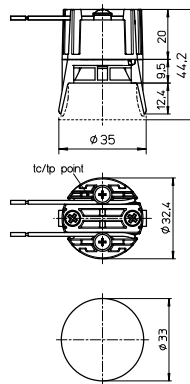
### Maximum ratings

Exceeding the maximum ratings can lead to reduction of service life or destruction of the modules.

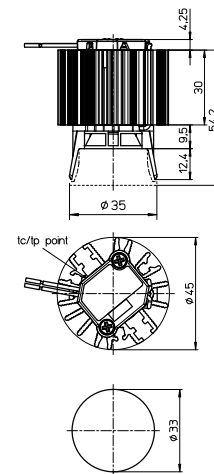
Type	Ambient temperature range ( $t_a$ )		Operation temp. at $t_c$ point with max. current		Storage temperature range		Max. allowed repetitive peak current mA
	°C min.	°C max.	°C min.	°C max.	°C min.	°C max.	
A – 100 mA	-20	+45	-25	+75	-40	+90	500
B – 350 mA	-20	+45	-25	+85	-40	+90	1000

Temperatures depend on installation situation and has to be checked by the luminaire manufacturer.

### A – Engine 100 mA



### B – Engine 350 mA



## LED Engines for Mister11

### Electrical characteristics

Type	50 mA		100 mA		300 mA		350 mA	
	P <sub>el</sub> (W)	V <sub>f</sub> (V)	P <sub>el</sub> (W)	V <sub>f</sub> (V)	P <sub>el</sub> (W)	V <sub>f</sub> (V)	P <sub>el</sub> (W)	V <sub>f</sub> (V)
E.MisteR 11 – E	1.6	32.2	3.3	33.2	–	–	–	–
E.MisteR 11 – D	–	–	–	–	5.1	17.1	6.1	17.3

Voltage and power tolerance: ± 10%

### Optical characteristics

at t<sub>p</sub> 65 °C

Type	Ref. No.	Colour	Correlated colour temperature K	Typ. luminous flux and efficiency at				CRI R <sub>a</sub>	Energy efficiency at max. current
				50 mA		100 mA			
				lm	lm/W	lm	lm/W		

#### LEDspot Engine Mister11 up to 100 mA – Drawing A

E.MisteR 11 27K - E	<b>570354</b>	warm white	2700	210	131	420	127	90	A++
E.MisteR 11 30K - E	<b>570355</b>	warm white	3000	225	141	440	133	90	A++

Production tolerance of luminous flux and efficiency: ± 10%

Type	Ref. No.	Colour	Correlated colour temperature K	Typ. luminous flux and efficiency at				CRI R <sub>a</sub>	Energy efficiency at max. current
				300 mA		350 mA			
				lm	lm/W	lm	lm/W		

#### LEDspot Engine Mister11 up to 350 mA – Drawing B

E.MisteR 11 27K - D	<b>570356</b>	warm white	2700	540	106	610	101	90	A++
E.MisteR 11 30K - D	<b>570357</b>	warm white	3000	570	112	635	106	90	A++

Production tolerance of luminous flux and efficiency: ± 10%

## Flange for LED Engines Mister11

### Technical notes

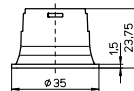
For click-in fixation on holder

Diameter: 35 mm

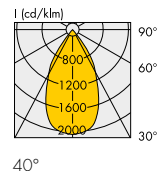
Operating temperature: –25 to 90 °C

Storage temperature: –40 to 90 °C

Plastic clear cover to protect the reflector



Ref. No.	Material colour	Cover	Beam angle (°)	Optical efficiency (%)	Weight g
<b>570352</b>	black	clear	40	60	5
<b>on request</b>	white	clear	–	–	5



## LED Drivers

You will find more information about our LED drivers on our website: [www.vossloh-schwabe.com](http://www.vossloh-schwabe.com)

Capacity range (W)		Output current DC mA	Output voltage DC V	Mains voltage (V) 50–60 Hz	Ref. No.	Version	Current setting	Dimming	Max. service life hrs.	at t <sub>c</sub> °C	Dimensions (LxVxH) mm	For type	
min.	max.											100 mA	350 mA
<b>100 mA</b>													
2.9	4	100	29–40	220–240	<b>186905</b>	EasyLine	—	—	50,000	70	85x50x19	x	—
<b>300 mA</b>													
3	16.2	300	10–54	220–240	<b>186762</b>	Primeline	DIP switch	DALI	100,000	75	97.2x43.2x30.1	—	x
3	16.2	300	10–54	220–240	<b>186763</b>	Primeline	DIP switch	DALI	100,000	75	146.5x43.2x30.1	—	x
<b>350 mA</b>													
0.7	11.2	350	2–32	220–240	<b>186679</b>	ComfortLine	—	—	50,000	70	128x37x28	—	x
1.05	8.75	350	3–25	220–240	<b>186519</b>	ComfortLine	—	—	50,000	80	65x30.7x21.5	—	x
2.95	12.6	350	8.4–36	220–240	<b>186341</b>	EasyLine	—	—	50,000	65	122.8x45x19	—	x
3.5	18.9	350	10–54	220–240	<b>186762</b>	Primeline	DIP switch	DALI	100,000	75	97.2x43.2x30.1	—	x
3.5	18.9	350	10–54	220–240	<b>186763</b>	Primeline	DIP switch	DALI	100,000	75	146.5x43.2x30.1	—	x
0.7	14	350	2–40	220–240	<b>186229</b>	ComfortLine	—	—	100,000	70	146.7x21x18	—	x
1.05	14.35	350	3–41	46–50 (DC)	<b>186833</b>	EasyLine	—	—	100,000	90	59.4x14x10.2	—	x

Please ensure you choose the correct LED driver for the module in question and that the respective output parameters (current, voltage, wattage) are correct.

The values contained in this data sheet can change due to technical innovations. Any such changes will be made without separate notification.

## General information

Performance acc. to IEC 62717:  $t_p = 70\text{ °C}$ ; 100,000 hrs. (A – 100 mA) /  $t_p = 80\text{ °C}$ ; 100,000 hrs. (B – 350 mA)

## Packaging unit

Type	Packaging unit pcs.	Box dimensions (LxWxH) mm	Weight single (g)	Gross weight packaging unit (g)
E.MisteR 11 27K - E	45	600x400x80	20	1420
E.MisteR 11 27K - D	45	600x400x80	65	3450
Flange	45	200x140x52.5	4.6	355

## Product guarantee

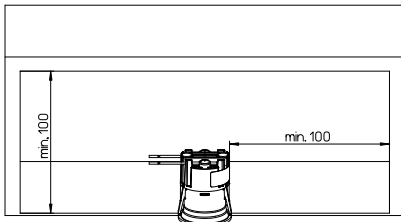
- 5 years
- The conditions for the Product Guarantee of the Vossloh-Schwabe Group shall apply as published on our homepage ([www.vossloh-schwabe.com](http://www.vossloh-schwabe.com)). We will be happy to send you these conditions upon request.

## General safety and installation instructions

- VS product may only be installed and commissioned by authorised and fully qualified staff.
- These instructions must be carefully read before installing and commissioning the system, as this is the only way to ensure safe and correct handling.
- An external constant-current driver is required.
- Before any work is carried out on the equipment, it must be disconnected from the mains.
- All valid safety and accident-prevention regulations must be observed.
- The products should never be inexpertly opened. Repairs may only be undertaken by the manufacturer.

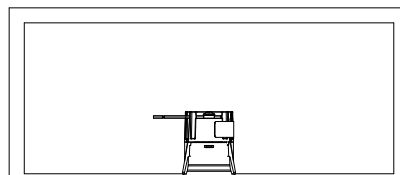
### Built-in

#### MisteR11 – 100 mA

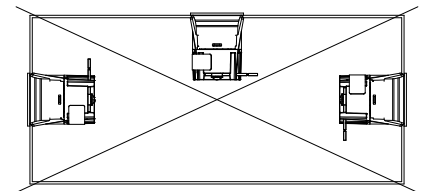


### Correct position

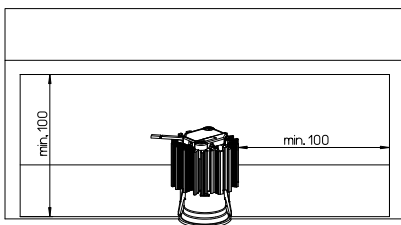
OK



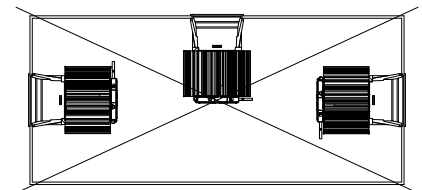
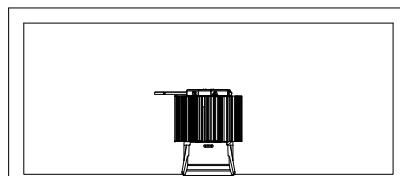
### Wrong position



#### MisteR11 – 350 mA



OK



The values contained in this data sheet can change due to technical innovations. Any such changes will be made without separate notification.